

MORNING DROP-OFF

Pre-School Drop-Off

Enter at the Middle drive on the North side and exit to the West. Stop to unload at the Elementary wing doors. Any K-8 students will unload and walk around the church to their Line Up Areas.

K-8 Drop-Off

Enter at the Middle drive on the North side and follow around to the South. Once a full line of vehicles has stopped in the drop-off areas [from the sidewalk in front of the church to the Jr. High door], ALL students must exit on the curb side in a swift and safe manner. Once students have exited, proceed CAREFULLY out past the rectory on to W. Broadview. Do NOT exit back to Vine nor Skyway.

PLEASE ALWAYS PULL UP!



- Pre-School ONLY Drop-Off Lane
- K-8th School Drop-Off Lane
- K-5 Line Up Area
- Pre-School ONLY Drop-Off Area
- K-8th School Drop-Off Area
- 6-8 Line Up Area

AFTERNOON PICK-UP

Singles Pick-Up

Enter at the Middle drive on the North side. Line up on the East side of church. Students shall enter the vehicle from the curb side and once securely seated, CAREFULLY merge and proceed out past the rectory on to W. Broadview. Do NOT exit back to Vine nor Skyway.

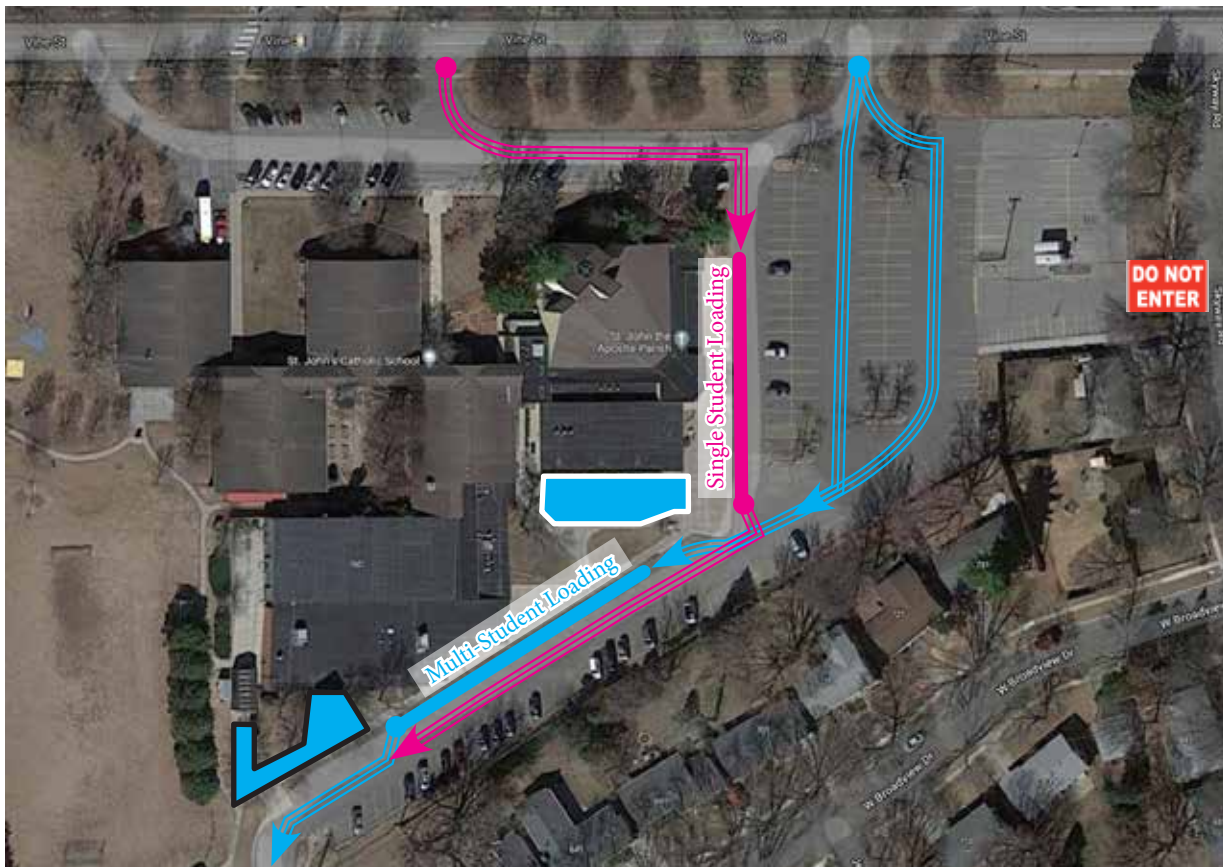
Multi-Student Pick-Up

Enter at the Northeast drive. Wait in line at the curb to the South of the school. If full, create two waiting lines in the East parking area. As vehicles move up, continue to merge and follow to the Pick-Up area on the South side of the school.

DO NOT block Single Line Exit.

Once students have entered, merge CAREFULLY and proceed out past the rectory on to W. Broadview. Do NOT exit back to Vine nor Skyway.

PLEASE ALWAYS PULL UP!



- Single Student Pick-Up Lane
- Multi-Student Pick-Up Lane
- K-5 Line Up Area
- Single Student Pick-Up Area
- Multi-Student Pick-Up Area
- 6-8 Line Up Area